



MERCED YOSEMITE AIRPORT TERMINAL REPLACEMENT PROJECT

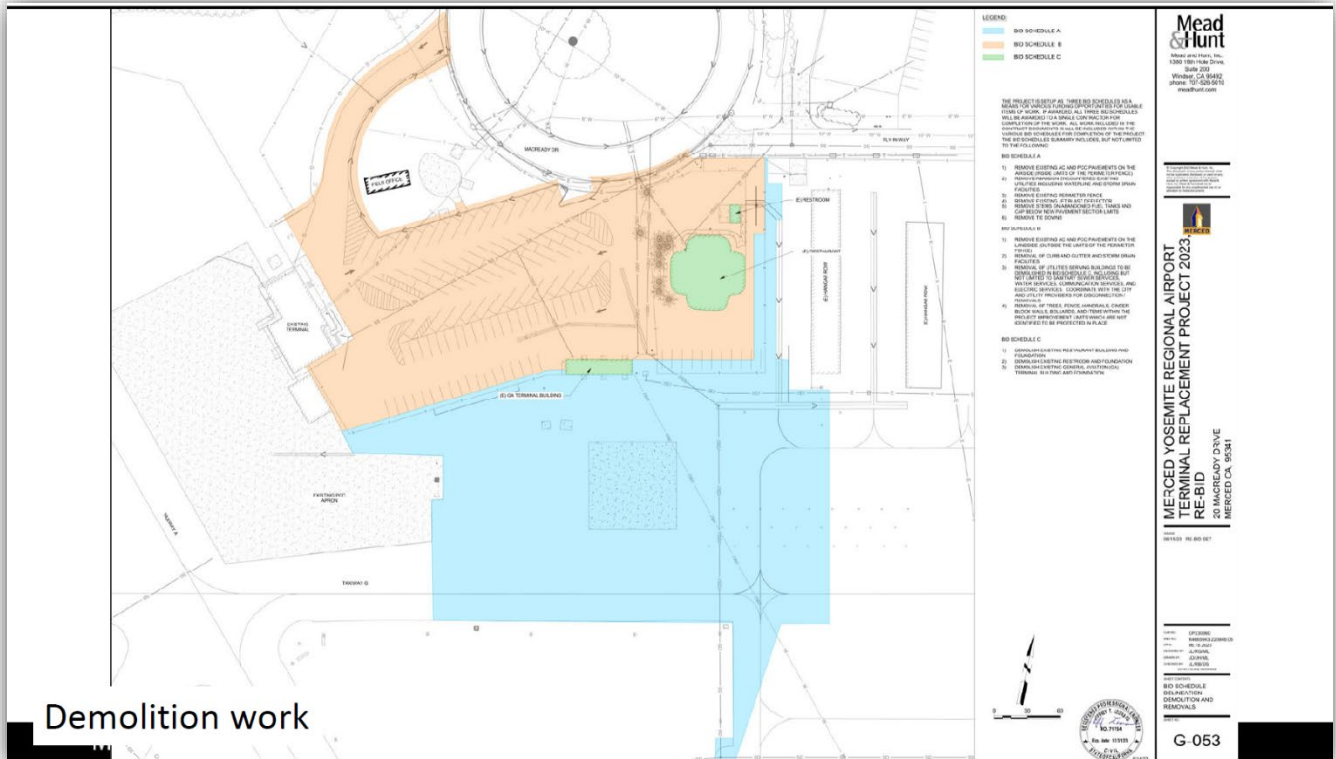


- The Terminal Replacement Project is supported by over \$14 million in federal funding.
- Merced Yosemite Regional Airport (MCE) is a commercial- general aviation airport owned by the City of Merced. It is served by Advanced Air, a scheduled commuter and private charter airline based in Hawthorne, California, with flights daily to and from Los Angeles and Las Vegas.
- The airport offers free parking and is the closest major city with an airport to Yosemite National Park. YARTS service provides convenient year-round routes from the airport to the park. Additionally, the airport will serve as an accessible connection to Amtrak, future ACE, and high-speed rail service.
- The airport's facilities will be updated to meet the growing needs of our community's commercial and private aviation travel. Currently, travelers are served through a 5,000 square foot, 1940s-era building with insufficient office space, limited space for TSA checkpoint screening, and inadequate passenger holding space.
- This Terminal Replacement Project includes an energy-efficient, sustainable facility to support current and future aviation needs, including updated passenger holding areas with restrooms, a dedicated TSA area, and offices, other aviation, and airport administration offices, upgraded and improved airside services to and enhance every passenger's experience.

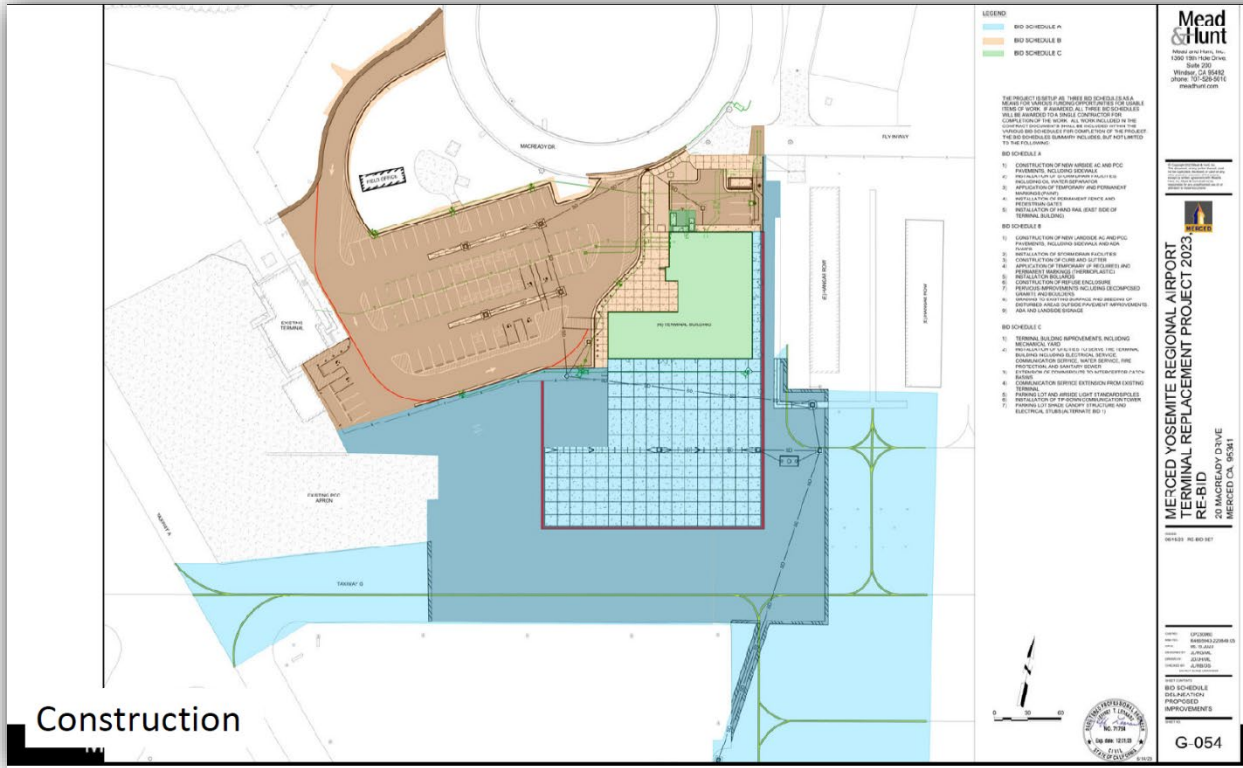
MCE Terminal 2023



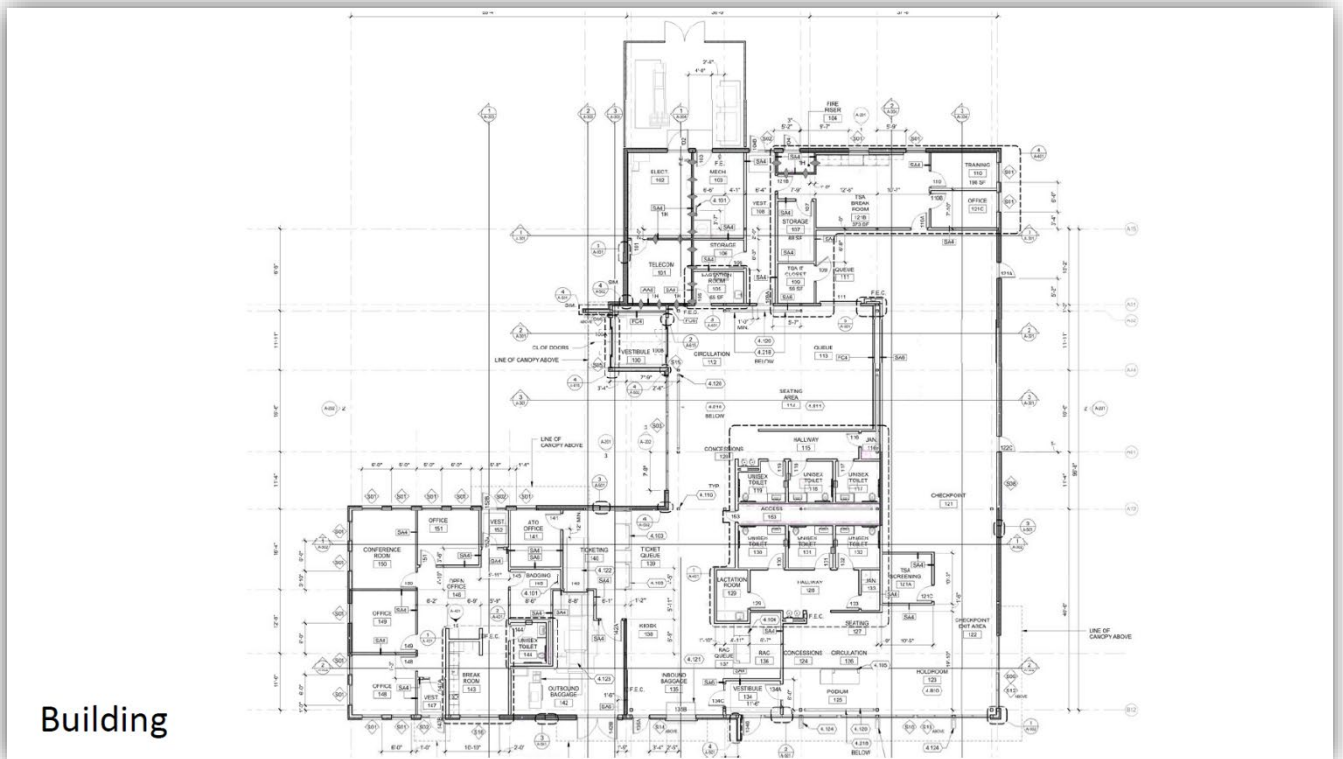
Mead&Hunt

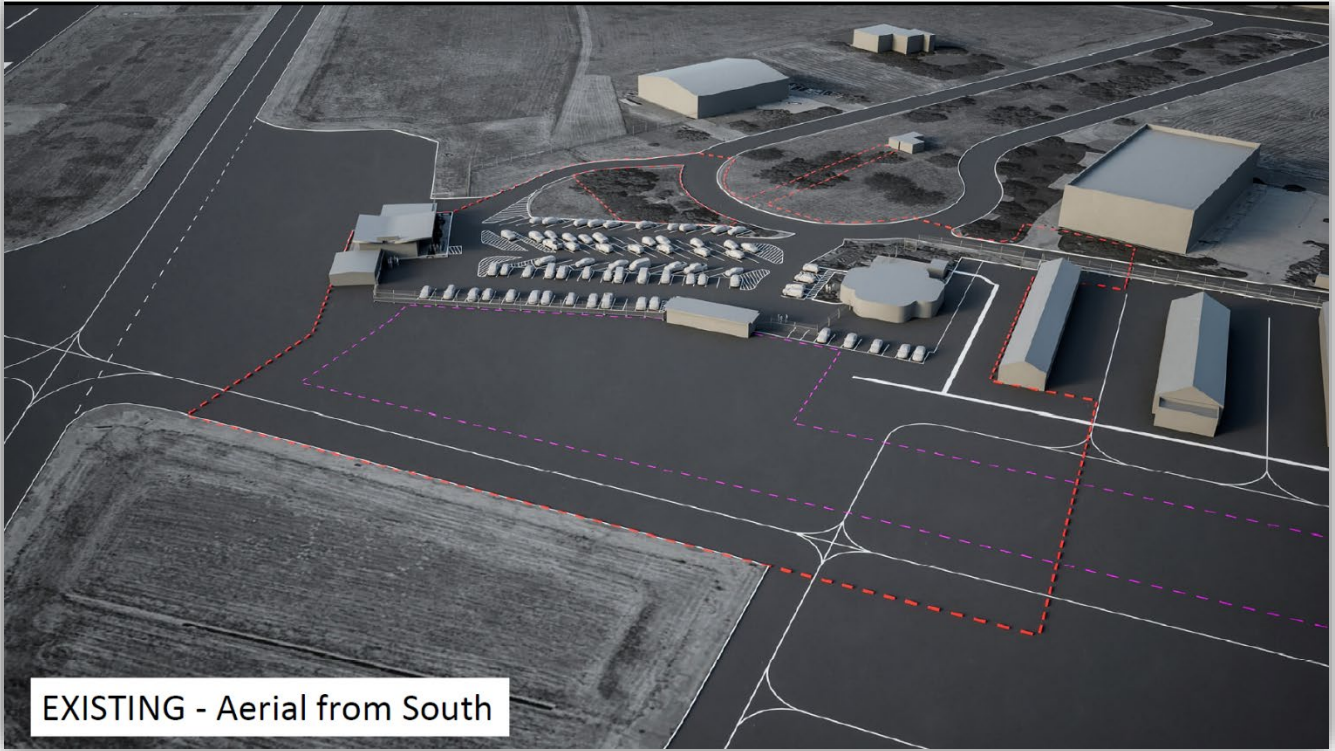


Demolition work



Construction





EXISTING - Aerial from South



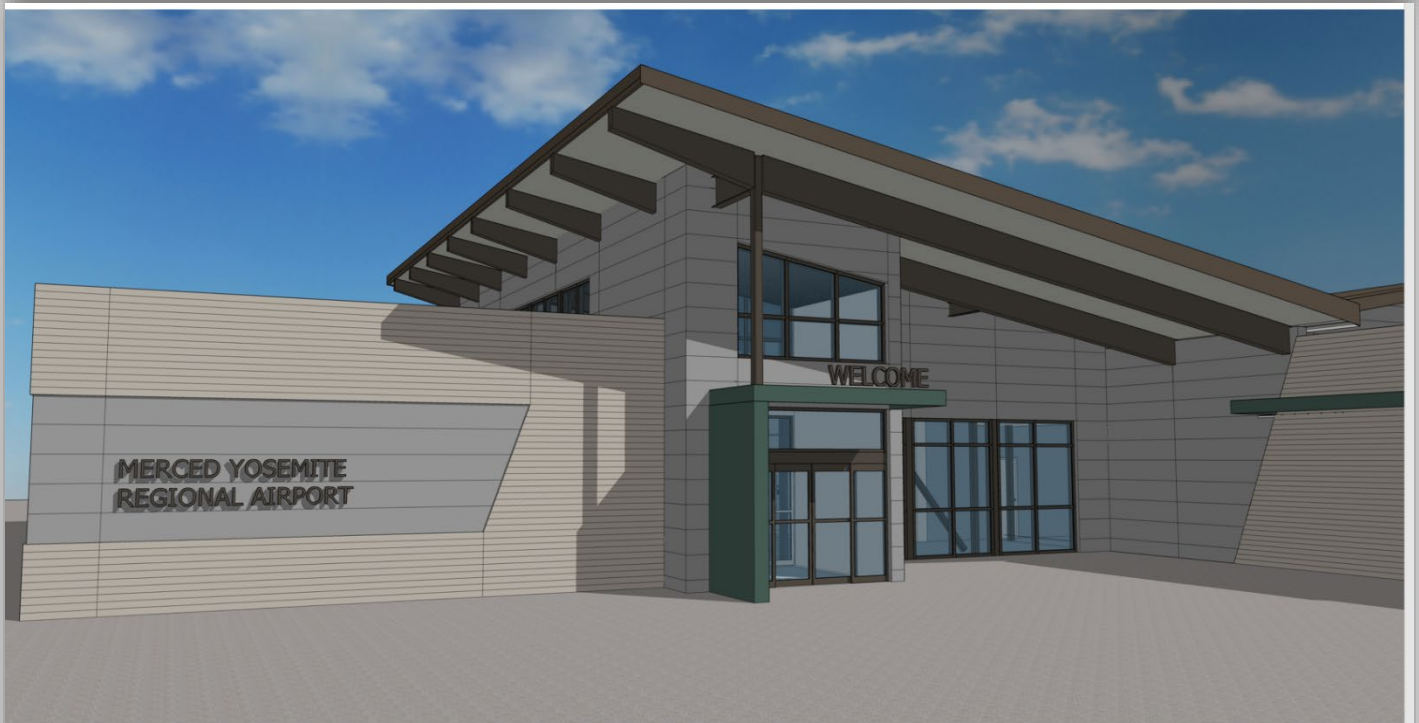
NEW - Aerial from South







Mead&Hunt



Mead&Hunt